


P.A. – S.p.A. – EQUIPAGGIAMENTI TECNICI DEL LAVAGGIO

VIA MILANO, 13 – CASELLA POSTALE 115 – 42048 RUBIERA (REGGIO EMILIA) – ITALY
 Tel. +39 0522 623611 – Fax. +39 0522 629600 – R.E.A. RE 156319 – R.I. RE11535 – Mecc. RE 013446
 C.F. e P. IVA 01035950359 – Cap. Soc. i.v. € 750.000,00 – Codice Identificativo C.E.E. IT 01035950359
 ART. 2497 – BIS C.C. DIREZIONE E COORDINAMENTO BENETTI srl R.I. TRIB. DI RE 01480690351
 Web: <http://www.pa-etl.it> – E-mail: info@pa-etl.it



RL26 Low pressure Weeping – Spray gun 250 bar – 25 MPa

 Technical manual : **E 137**

Guns suitable for use up to 250 bar – 25 MPa rated pressure pumps.
 No fluid passage upon trigger release.
 Fluid loss only at low pressure.

DN10


- **30.1780.00** RL26 Weeping G3/8 G1/4 FF
- **30.1782.00** RL26 Weeping + SW6 G3/8 G1/4 FF

- Covered by shockproof plastic semi-housings.
- Sst seat and ball.
- Internal structure in brass and Sst.
- Ergonomic construction.
- Minimum fatigue for trigger opening and use.

TECHNICAL SPECIFICATIONS

Maximum temperature 160°C (1)

P/N	RATED PRESSURE bar - MPa	PERMISSIBLE PRESSURE bar - MPa	MAX FLOW RATE l/min	FINAL WEEPING PRESSURE bar (MPa)	PRESSURE WITH WEEP 2.8bar- 0.3MPa l/min	INLET - OUTLET	WEIGHT gr
30.1780.00	250 - 25	280 - 28	30	0÷12 (1.2)	1.7	G3/8 G1/4 FF	380
30.1782.00	250 - 25	280 - 28	30	0÷12 (1.2)	1.7	G3/8 G1/4 FF	400

(1) The gun has been designed for continuous use, at a water temperature of 90°C (195°F). It can resist at the max temperature of 160°C (320°F) for short periods only, as, when the gun shuts off, the heater continues to transmit the heat to the water, thus increasing both temperature and pressure up to high, dangerous values. Using the gun at a water temperature higher than 60°C involves for the operator the use of adequate safety devices, such as gloves, glasses, etc.

Instruction manual, maintenance, installation, spare parts.

For a correct utilization, follow the directions of this manual

Re-print them on the Use and Maintenance booklet of the machine.

n. 12.9137.00

Difficult trigger opening	High pressure inside circuit	Control the bypass valve and adjust if necessary
---------------------------	------------------------------	--

REGULATIONS

The design and construction of our products comply with: norm CEI EN 60335-2-79 first edition, published in 1999-03 and its respective variations on the project norm prEN 1829.

Read this manual before starting the assembly.

For a correct utilization, follow the directions described in this manual and re-print them on the Use and maintenance manual of the machine.

The present manual is valid for all the guns named **RL 26 Weeping Low pressure**

SPARES

Use original PA spares only in order to get both a correct operation and a long lasting, reliable product..

MAINTENANCE

Maintenance has to be carried out by **Specialized Technicians**.

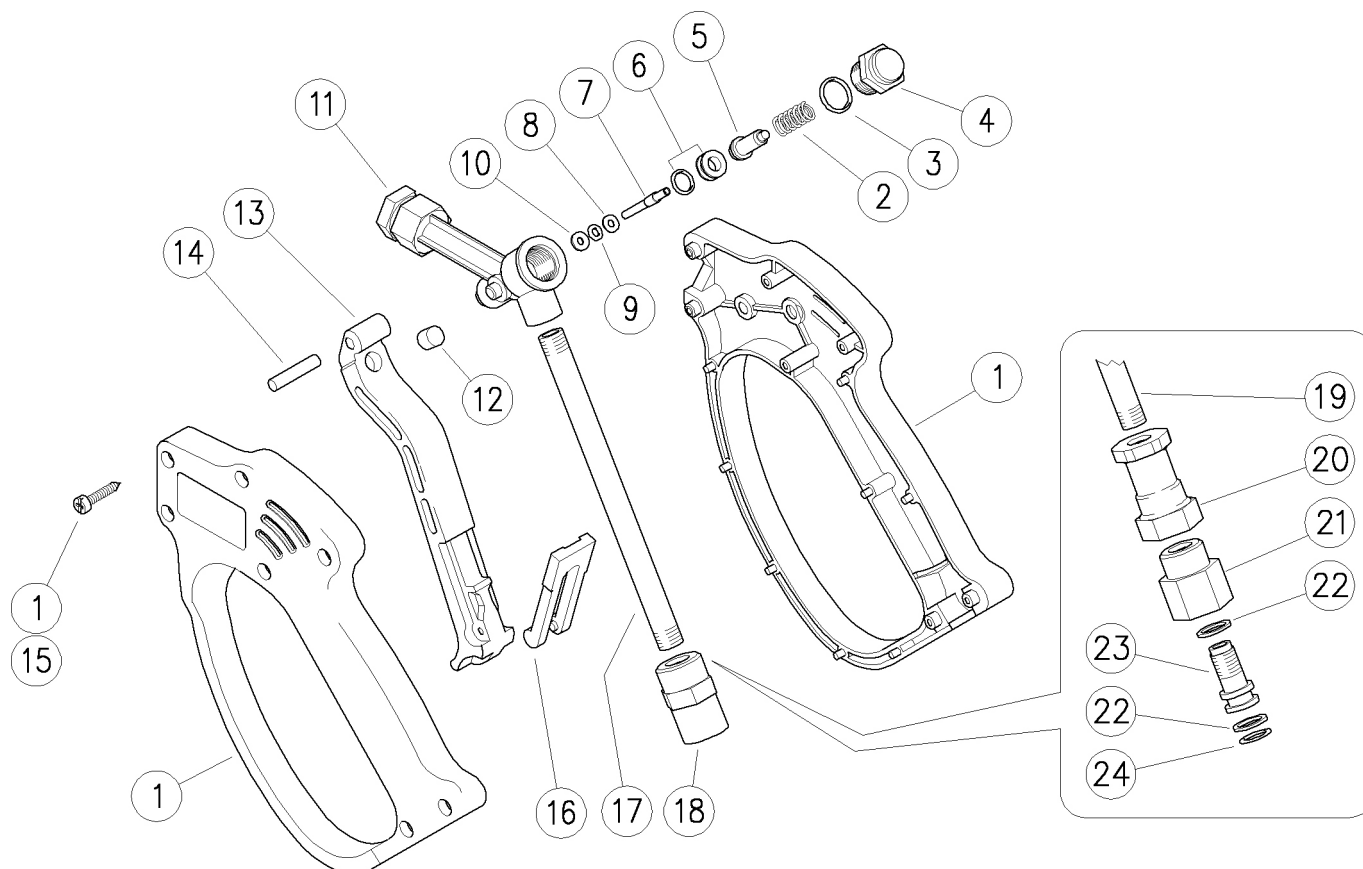
STANDARD: every 400 working hours (circa 10,000 cycles), check and lubricate the seals with water resistant grease.

SPECIAL: every 800 working hours(circa 20,000 cycles), check the wear of the seals and internal parts and if necessary, replace with original PA parts, taking care during installation to lubricate with water resistant grease.

CAUTION: re-assemble the gun restoring the original conditions.

The manufacturer is not to be considered responsible for damage as a result from incorrect fitting and maintenance.

Technical data, descriptions and illustrations are indicative and liable to modification without notice.



Pos.	P/N	Description	Q.ty	K1	K2	K3	K4	
1	30.1759.24	Casing-kit -RL26 +screws, Sst.	1					1
2	30.1764.51	Spring, 1,3x9,1x24 mm Sst.	1					25
3	10.3060.01	O-ring, 1,78x12,42 mm Ni 85	1	•				10
4	30.1763.31	Plug, M14x1 brass	1					10
5	30.1762.21	Shutter, complete	1	•				5
6	30.1708.20	Seat, 6mm Sst.+O-ring 1,78mm NBR85	1	•				10
7	30.0704.51	Piston, 3-4 mm Sst.	1	•				10
8	14.3511.00	Washer, 3,2x7x0,5 mm sst.	1	•				10
9	10.3165.00	O-ring, 2,62x2,84 mm Vi 70	1	•				10
10	10.4018.00	Back-up ring, 3,2x7,5x1,2 mm	1	•				10
11	30.1700.35	Central housing -RL26, 1/4F Bsp brass	1					5
12	30.0675.84	Stop pin, 8x7,1mm PA	1					10

Pos.	P/N	Description	Q.ty	K1	K2	K3	K4	
13	30.1704.84	Trigger -RL26, PA black	1					10
14	30.0509.31	Parallel pin, 5x24,5 mm brass	1					10
15	16.3075.51	S/tapping scr. 3,5x18 mm sst.	7					10
16	30.2599.84	Safety latch, PA green	1					10
17	30.0706.56	Tube, 1/8Bsp MM Sst.	1					10
18	30.1512.31	Coupl., 1/8F-3/8F Bsp brass	1					5
19	30.1731.56	Tube, 1/8Bsp MM 116 mm Sst. (1)	1					5
20	30.1733.31	Adapt., M10x1F-1/8F Bsp brass (1)	1					5
21	30.2019.31	Coupl., 3/8F Bsp brass (1)	1					5
22	10.4010.01	Back-up ring,10,2x13,9x1,2mm (1)	2					50
23	30.1732.31	Pin -SW, M10x1 M (1)	1					5
24	10.3171.10	O-ring, 2,62x9,19 mm Vi 70 (1)	1					10

Kit	P/N	Description	
K1	30.1766.24	Repair kit -RL25 weep.LP, 7x1pcs.	1

(1) 30.1782.00